

T- Clamp

TrinaTracker has developed and patented an innovative module mounting design that reduces both material and installation costs for framed modules.



Patent

PCT/E52017/070495



Trackrecord



Own production
center



We adapt to
customer needs



Wind tunnel test

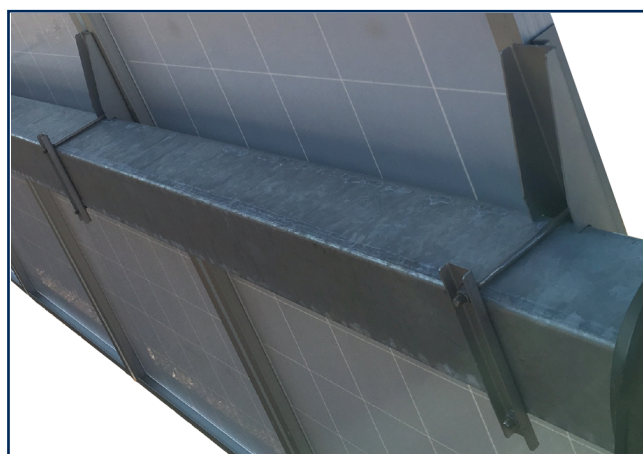
FEATURES

- Lightweight, 30% less than short purlin (19')
- Reduced parts and pieces
- Combined purlin and module attachment hardware
- UL-compliant integrated grounding features
- Load tested to ASTM standards

BENEFITS

- Module installation independent from tracker assembly
- No hardware during module installation
- Nut driver only tool for module installation
- Minimized man-hours for module installation with a reduction up to 70%

TrinaTracker's module mounting system is designed for ease of installation by separating tracker assembly skills, hardware, and tools from the module assembly process. The purlin clamp system is pre-assembled on the tracker so modules can be installed with only a nut driver. This result in industry leading efficiency and lowest cost module installation.



MATERIAL

- Reduced number of parts and pieces
- Minimum steel



TRACKER ASSEMBLY

- Purlin and clamp assembled in one step
- Clamp pre-assembled to eliminate hardware from module install



MODULE INSTALLATION

- Nut driver only tool
- Fewest man-hours per MWp

Compared to traditional solutions, the new T-Clamp reduces assembly time of modules by more than 70%. It also lessens the weight of the material by more than 30%.

	UL Clip / Long Purling	Rivets / Short Purling	T- CLAMP
# parts	8	6	5
# pieces	12	10	6
Total Weight (Kg)	4.5	2.2	1.5
Man Hours / MWp	380	300	70