

Trina mount II

by Trina solar

FOR PITCHED ROOF

10 YEAR

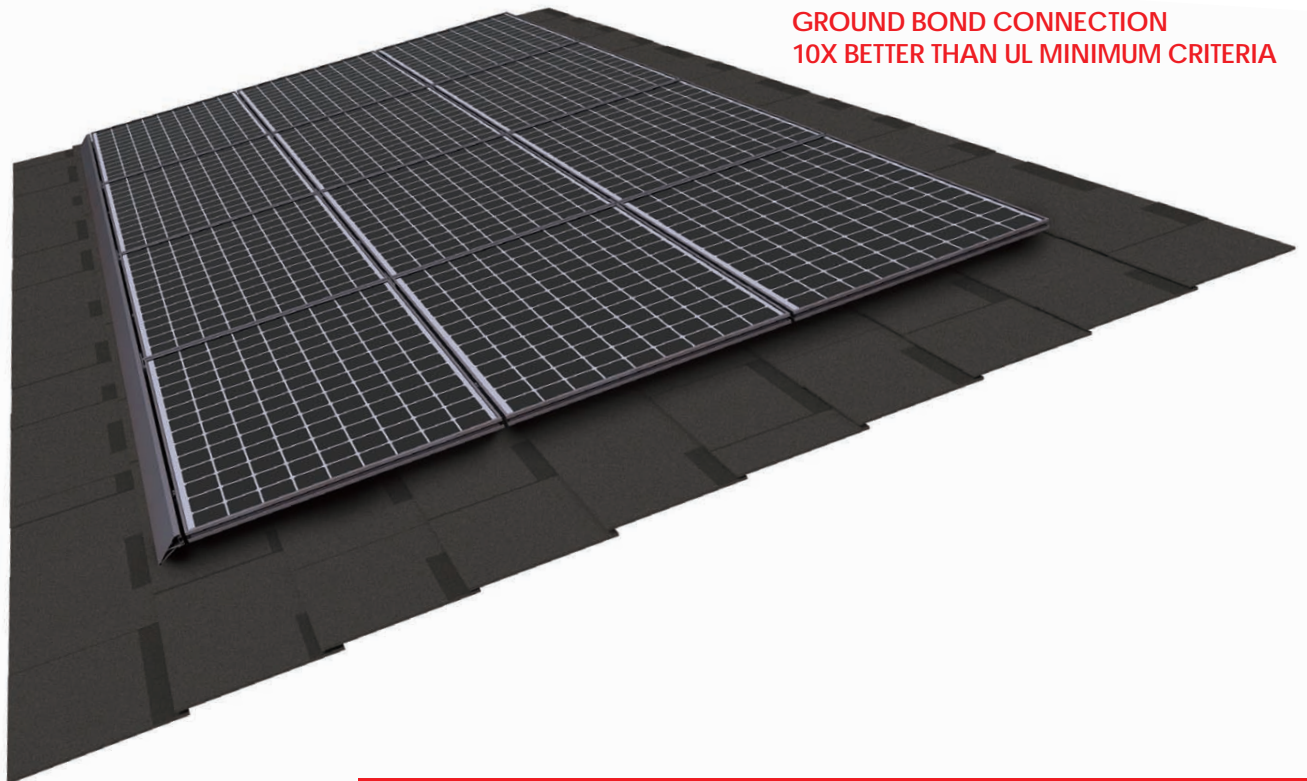
PRODUCT WARRANTY FOR MODULE
AND MOUNTING SYSTEM

5X

FASTER TO INSTALL

SIMPLIFIED GROUNDING

GROUND BOND CONNECTION
10X BETTER THAN UL MINIMUM CRITERIA



SUITABLE FOR



COMPOSITION SHINGLE



TRAPEZOIDAL METAL




STANDING SEAM ROOF


COMBINING PV MODULE EXPERTISE WITH A HIGHLY INNOVATIVE MOUNTING SYSTEM SOLUTION.


Trina Solar is introducing Trina mount — the fastest, easiest and least expensive way to mount PV modules onto residential and commercial rooftops. With a series of drop-in and quarter-turn connections on a specialized module frame, this mounting solution installs up to 5 times faster than conventional mounting systems. Trina mount connects directly to the module frame, eliminating the need for long rails. By drastically reducing the number of parts, cost of materials and installation time, Trina mount offers the optimal solution for residential and commercial installations.


Trinamount II FOR PITCHED ROOF


 **Fast and simple** to install through drop in mounting solution

 **Low parts and SKU count** in comparison to conventional mounting solutions

 **Superior aesthetic solution** for residential rooftops

 **Long rail elimination reduces** inventory and freight **cost**

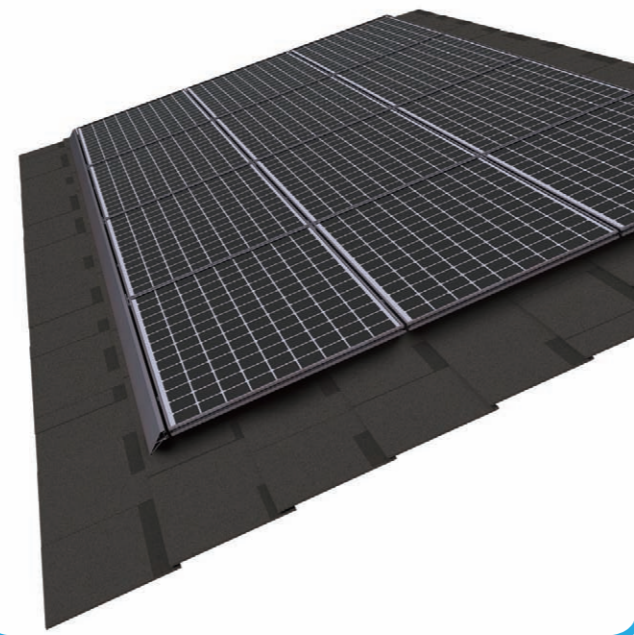
 **Theft resistant with auto grounding hardware**

 **Compact packaging** with module and mounting hardware delivered together

TRINA MODULE + MOUNTING SYSTEM HARDWARE

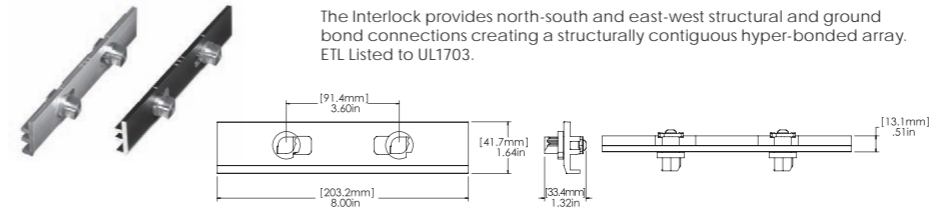


TRINAMOUNT SYSTEM

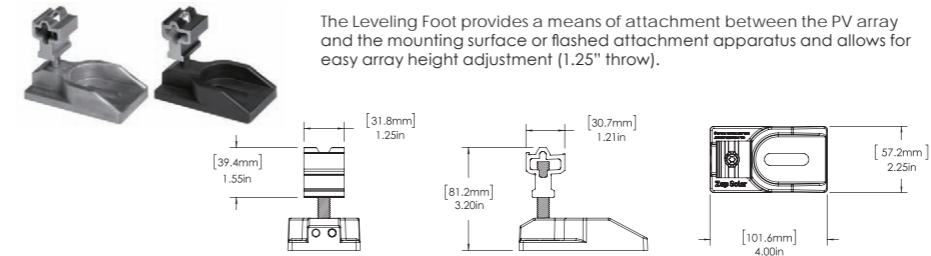


BASIC HARDWARE

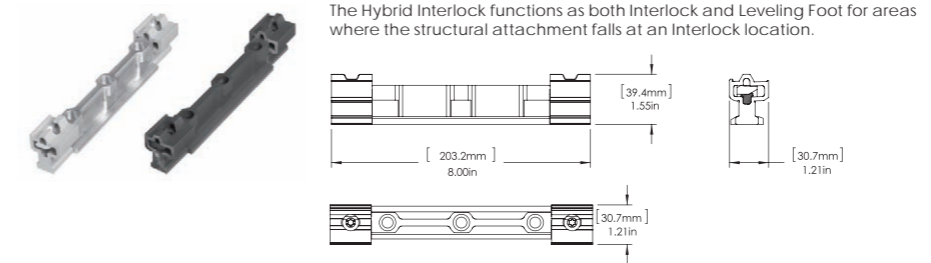
A Interlock



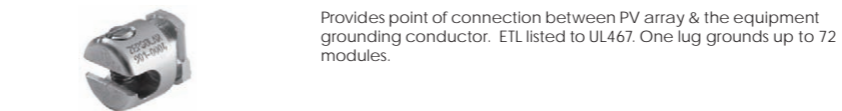
B Leveling Foot



C Hybrid Interlock



D Ground Lug



E Wire Clip

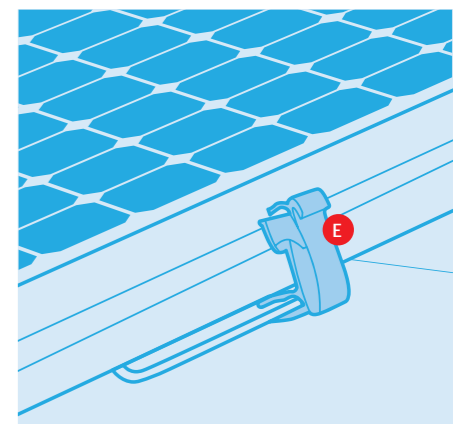
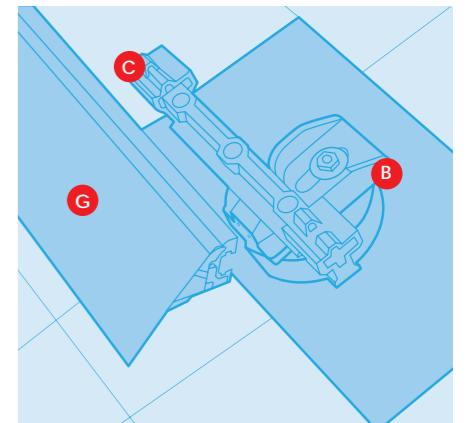
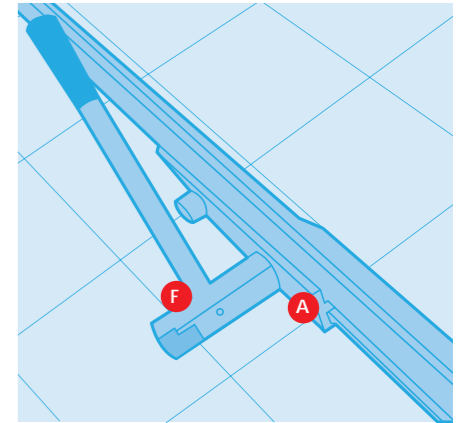
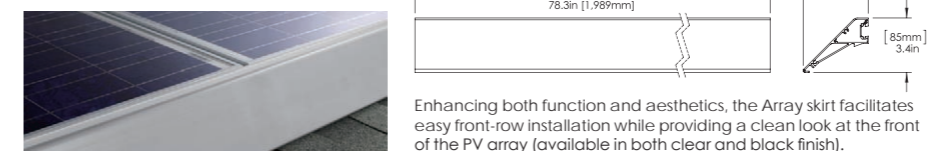


ACCESSORIES

F Trinamount Tool, Flat Tool



G Array Skirt

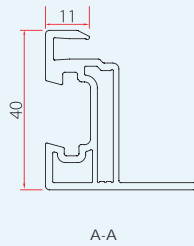
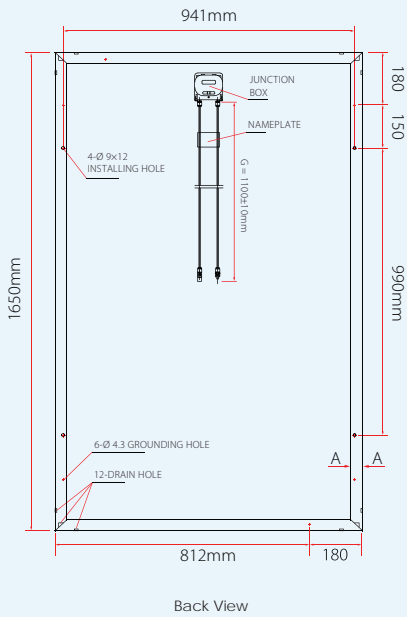


ORDERING INFORMATION

Part Number	Description	Type
720063	Interlock (Black)	H
720065	Hybrid Interlock (Black)	H
720075	Leveling Foot (Black)	H
720070	Ground Lug	H
720071	Wire Clip	H
720158	Array Skirt, 1663mm	A
720159	Array Skirt, 2008mm	A
720081	Trinamount Tool	A
720082	Flat Tool	A

H = Basic hardware A = Accessories (sold separately)

DIMENSIONS OF 60 CELL TRINAMOUNT MODULE



COMPATIBLE 60 CELL MODULES

MODULES

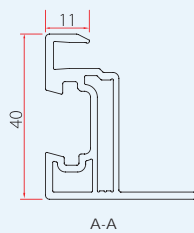
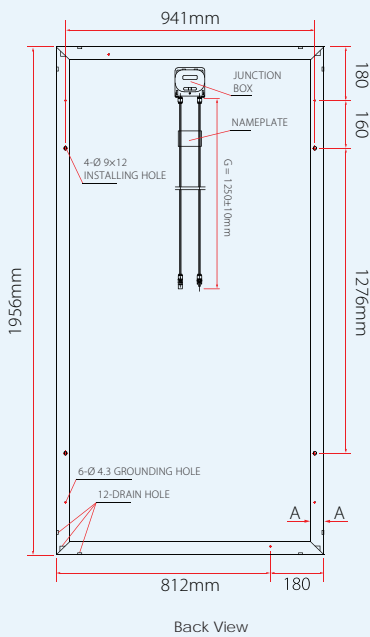
TSM-PC05.18
TSM-PC05A.18
TSM-PA05.18
TSM-PA05.15

FOR ELECTRICAL DATA PLEASE REFER TO RESPECTIVE DATASHEET OF ABOVE MODULE

MECHANICAL DATA

Solar cells	Multicrystalline 156 × 156mm (6 inches)
Cell orientation	60 cells (6 × 10)
Module dimension	1650 × 992 × 40mm (64.95 × 39.05 × 1.57 inches)
Weight	20.3kg (44.8 lb)
Glass	High transparency solar glass 3.2mm (0.13 inches)
Frame	Anodized aluminium alloy
J-Box	IP 65 rated
Cables / Connector	Photovoltaic Technology cable 4.0mm ² (0.006 inches ²), 1100mm (43.3 inches), Original MC4 / H4

DIMENSIONS OF 72 CELL TRINAMOUNT MODULE



COMPATIBLE 72 CELL MODULES

MODULE

TSM-PA14.18

FOR ELECTRICAL DATA PLEASE REFER TO RESPECTIVE DATASHEET OF ABOVE MODULE

MECHANICAL DATA

Solar cells	Multicrystalline 156 × 156mm (6 inches)
Cell orientation	72 cells (6 × 12)
Module dimensions	1956 × 992 × 40mm (77 × 39.05 × 1.57 inches)
Weight	27.6kg (60.8 lb)
Glass	High transparency solar glass 4.0mm (0.16 inches)
Frame	Anodized aluminium alloy
J-Box	IP 65 rated
Cables / Connector	Photovoltaic Technology cable 4.0mm ² (0.006 inches ²), 1250mm (49.2 inches), Original MC4

CERTIFICATION



TSM_EU_August 2011_RevA_Trinamount II Comp