

# Trina mount II

by TrinaSolar

## FOR PITCHED ROOF

### 10 YEAR

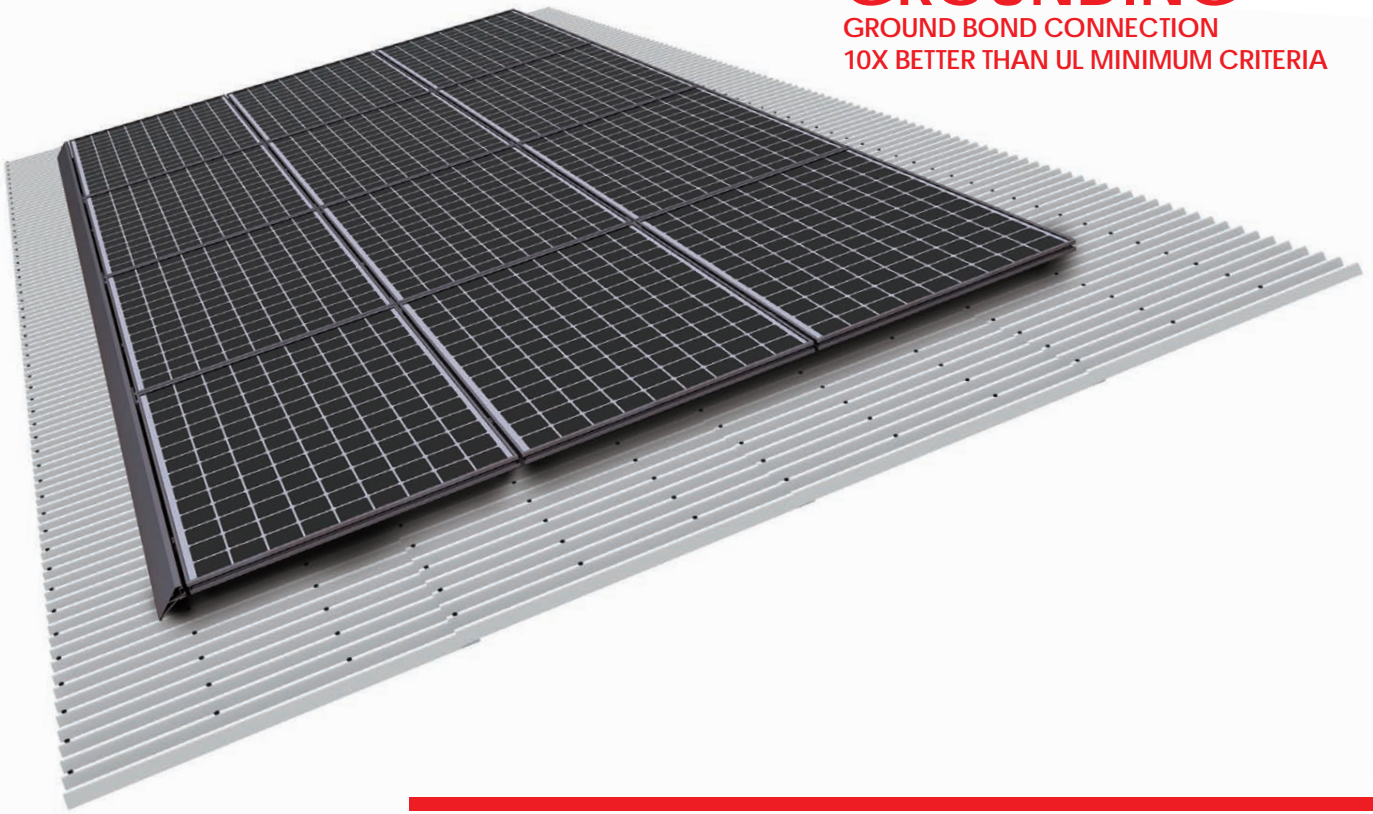
PRODUCT WARRANTY FOR MODULE  
AND RACKING SYSTEM

### 4.5X

FASTER TO INSTALL

### SIMPLIFIED GROUNDING

GROUND BOND CONNECTION  
10X BETTER THAN UL MINIMUM CRITERIA



SUITABLE FOR




CORRUGATED METAL


### COMBINING PV MODULE EXPERTISE WITH A HIGHLY INNOVATIVE MOUNTING SYSTEM SOLUTION.


Trina Solar is introducing Trina mount — the fastest, easiest and least expensive way to mount PV modules onto residential and commercial rooftops. With a series of drop-in and quarter-turn connections on a specialized module frame, this mounting solution installs up to 5 times faster than conventional mounting systems. Trina mount connects directly to the module frame, eliminating the need for long rails. By drastically reducing the number of parts, cost of materials and installation time, Trina mount offers the optimal solution for residential and commercial installations.


# Trinamount II FOR PITCHED ROOF


 **Fast and simple** to install through drop in mounting solution

 **Low parts and SKU count** in comparison to conventional mounting solutions

 **Superior aesthetic solution** for residential rooftops

 **Long rail elimination reduces** inventory and freight **cost**

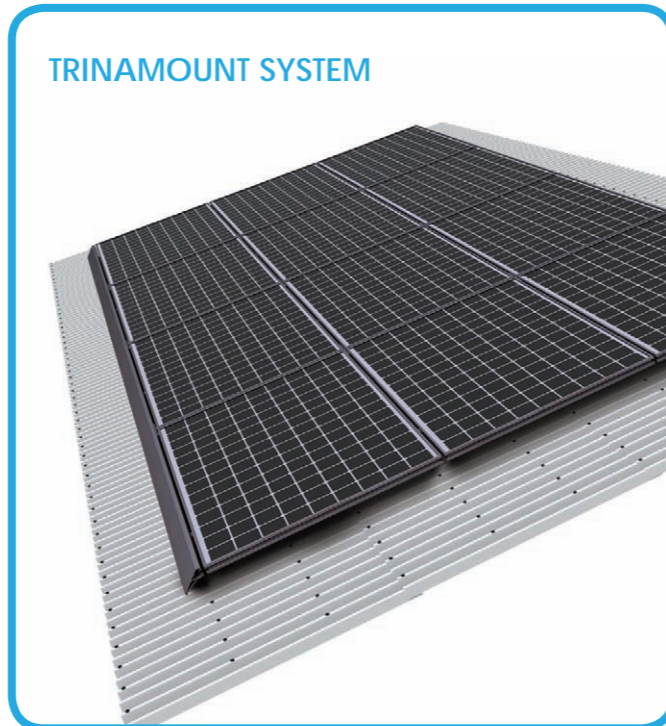
 **Theft resistant with auto** grounding hardware

 **Compact packaging** with module and mounting hardware delivered together

**TRINA MODULE + MOUNTING SYSTEM HARDWARE**

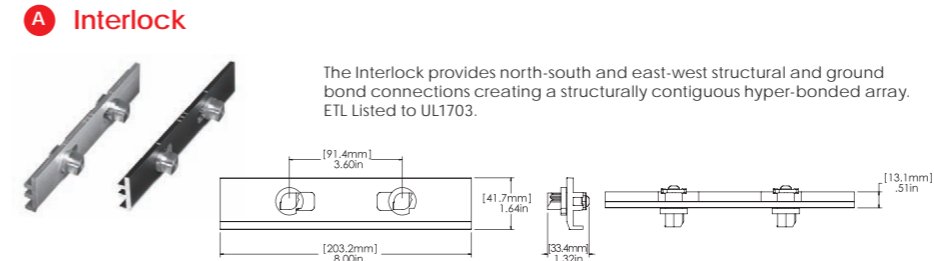


Trinamount Module, Interlock, Hybrid Interlock, Big Foot, Ground Bolt, Trinamount Tool



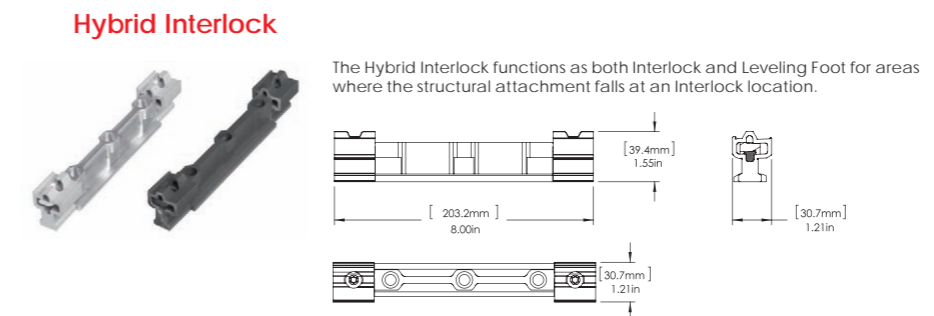
## BASIC HARDWARE

**A Interlock**



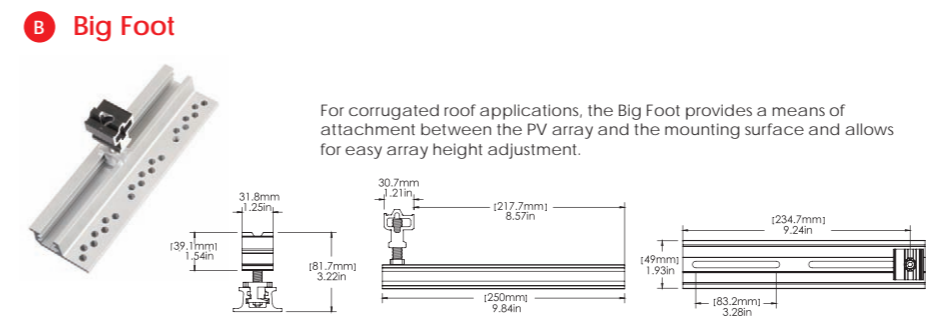
The Interlock provides north-south and east-west structural and ground bond connections creating a structurally contiguous hyper-bonded array. ETL Listed to UL1703.

**Hybrid Interlock**



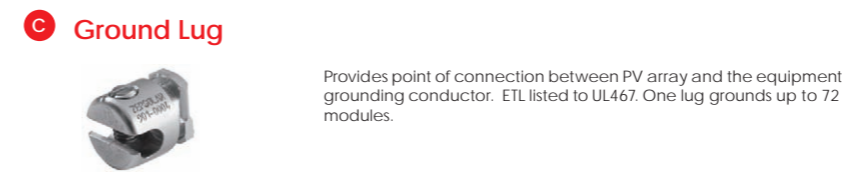
The Hybrid Interlock functions as both Interlock and Leveling Foot for areas where the structural attachment falls at an Interlock location.

**B Big Foot**



For corrugated roof applications, the Big Foot provides a means of attachment between the PV array and the mounting surface and allows for easy array height adjustment.

**C Ground Lug**



Provides point of connection between PV array and the equipment grounding conductor. ETL listed to UL467. One lug grounds up to 72 modules.

**D Wire Clip**



Clips into Groove for ultra-fast and easy management of PV wiring and micro-inverter cables.

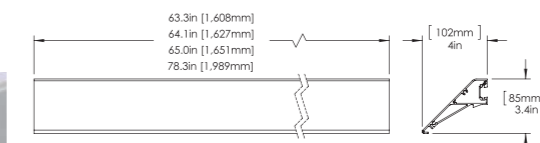
## ACCESSORIES

**E Trinamount Tool, Flat Tool**

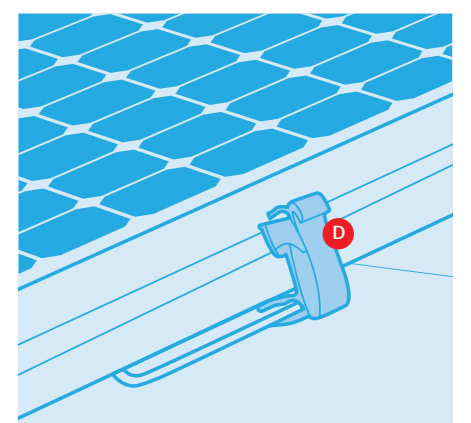
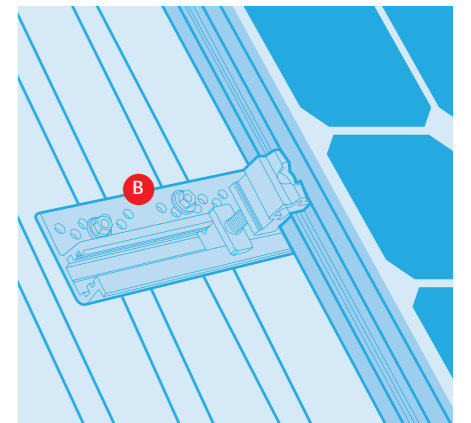
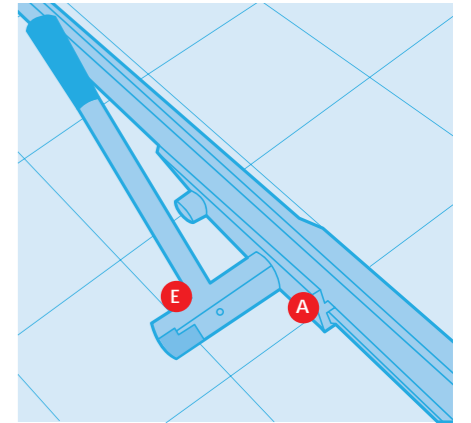


Trinamount Tool: 4 functions, 1 tool. Flat Tool: For inter-module removal.

## Array Skirt



Enhancing both function and aesthetics, the Array skirt facilitates easy front-row installation while providing a clean look at the front of the PV array (available in both clear and black finish).

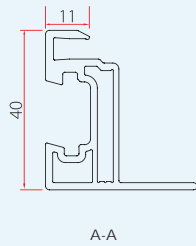
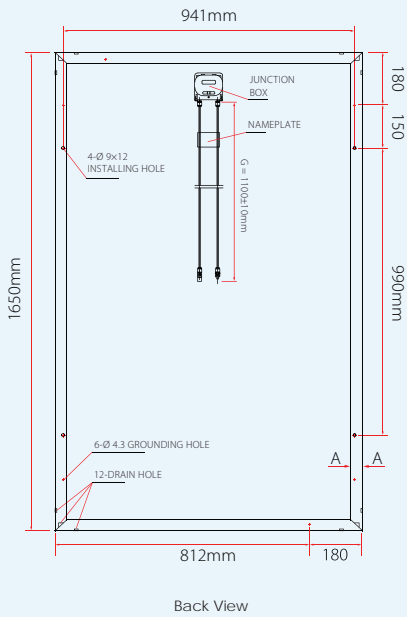


## ORDERING INFORMATION

Part Number	Description	Type
720063	Interlock (Black)	H
720065	Hybrid Interlock (Black)	H
720066	Cam Foot	H
720073	Big Foot	H
720070	Ground Lug	H
720071	Wire Clip	H
720158	Array Skirt, 1663mm	A
720159	Array Skirt, 2008mm	A
720081	Trinamount Tool	A
720082	Flat Tool	A

H = Basic hardware A = Accessories (sold separately)

## DIMENSIONS OF 60 CELL TRINAMOUNT MODULE



## COMPATIBLE 60 CELL MODULES

### MODULES

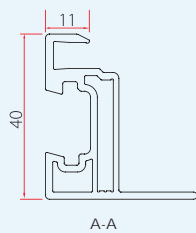
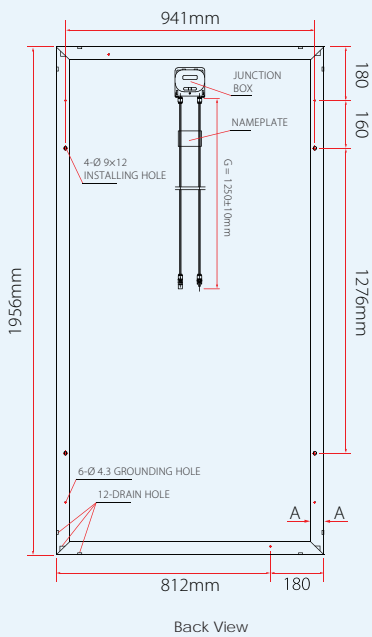
TSM-PC05.18
TSM-PC05A.18
TSM-PA05.18
TSM-PA05.15

FOR ELECTRICAL DATA PLEASE REFER TO RESPECTIVE DATASHEET OF ABOVE MODULE

### MECHANICAL DATA

Solar cells	Multicrystalline 156 × 156mm (6 inches)
Cell orientation	60 cells (6 × 10)
Module dimension	1650 × 992 × 40mm (64.95 × 39.05 × 1.57 inches)
Weight	20.3kg (44.8 lb)
Glass	High transparency solar glass 3.2mm (0.13 inches)
Frame	Anodized aluminium alloy
J-Box	IP 65 rated
Cables / Connector	Photovoltaic Technology cable 4.0mm <sup>2</sup> (0.006 inches <sup>2</sup> ), 1100mm (43.3 inches), Original MC4 / H4

## DIMENSIONS OF 72 CELL TRINAMOUNT MODULE



## COMPATIBLE 72 CELL MODULES

### MODULE

TSM-PA14.18
-------------

FOR ELECTRICAL DATA PLEASE REFER TO RESPECTIVE DATASHEET OF ABOVE MODULE

### MECHANICAL DATA

Solar cells	Multicrystalline 156 × 156mm (6 inches)
Cell orientation	72 cells (6 × 12)
Module dimensions	1956 × 992 × 40mm (77 × 39.05 × 1.57 inches)
Weight	27.6kg (60.8 lb)
Glass	High transparency solar glass 4.0mm (0.16 inches)
Frame	Anodized aluminium alloy
J-Box	IP 65 rated
Cables / Connector	Photovoltaic Technology cable 4.0mm <sup>2</sup> (0.006 inches <sup>2</sup> ), 1250mm (49.2 inches), Original MC4

## CERTIFICATION



TSM\_EU\_August 2011\_RevA\_Trinamount II Corr